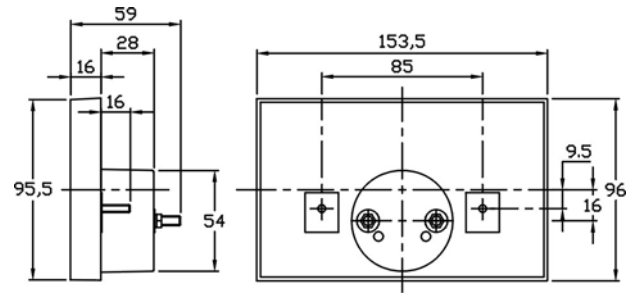
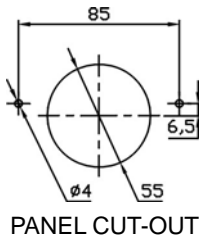




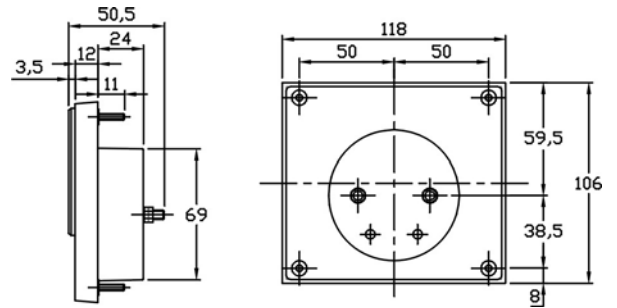
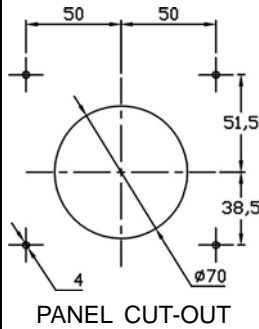
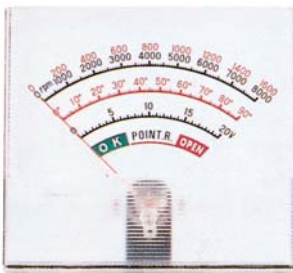
STANDARD

M SERIES

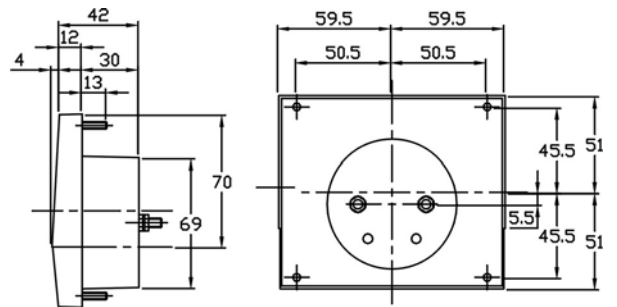
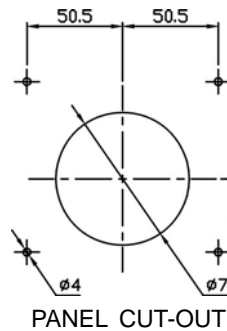
ST-150T



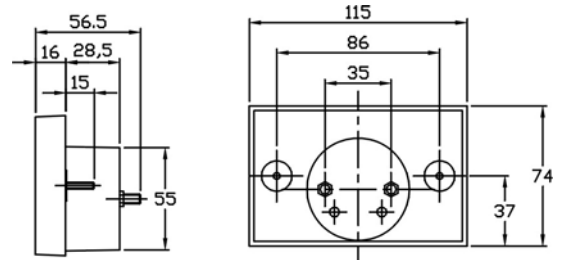
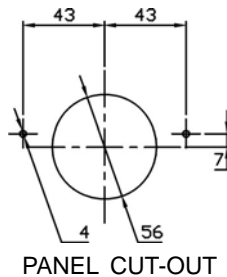
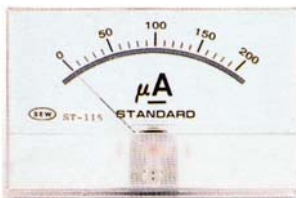
ST-118



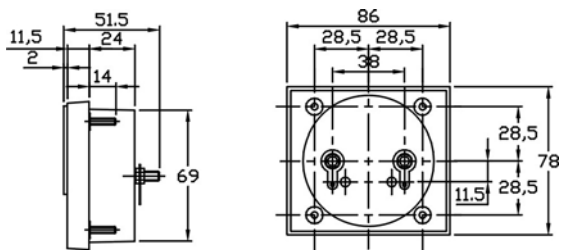
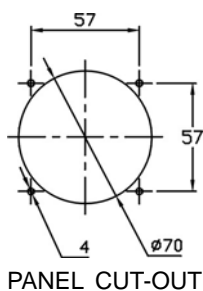
ST-118T



ST-115



ST-86

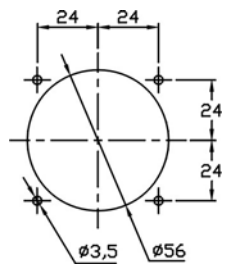
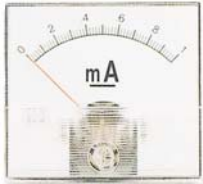




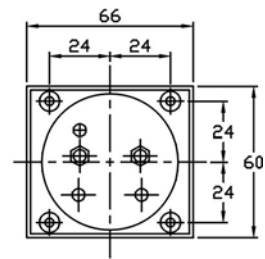
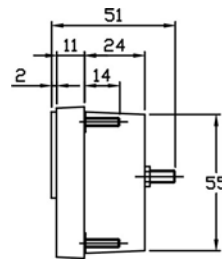
STANDARD

M SERIES

ST-66



PANEL CUT-OUT



Measuring Ranges :

Moving Coil Type :

DC μ A	DC mA	DC A	DC mV	DC V
50	1	1	50	3
100	5	5	60	5
150	10	10	100	10
200	50	15	500	30
250	100			50
300	150			100
500	200			150
800	300			200
	500			300
	800			500
				600

Rectifier Type :

AC V
30
50
100
150
200
300
500

M series all up to 15A

- **Case And Composition :** Acrylic resin front and ABS resin case.
Four stud mounting.
Two stud mounting for ST-115.
- **Accuracy :** Moving coil type : Class 2.0
Rectifier type : Class 2.0
- **Color :** Black case, white scale plates.
- **Pointer :** Tube type, color in black or red.