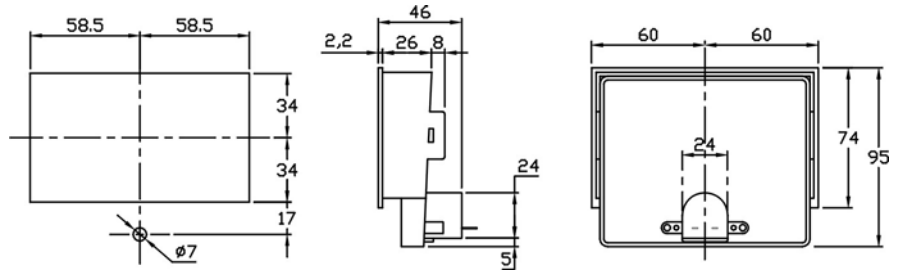


## ST-160



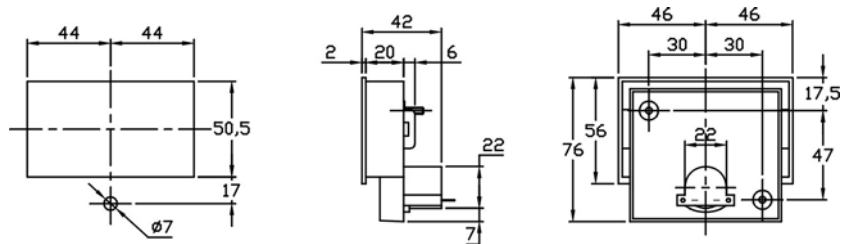
- 規格：DC uA – 200,500  
DC A – 1,5,10  
DC V – 5,10,15,20,30,50,100,150,300,500
- 準確度：2.0 級
- 材質：壓克力蓋，ABS 的底，Bezel mounting
- 顏色：黑底刻度板，黃色窗型外框固定
- 指針：管狀，橙紅色或黑色

視需要選擇燈泡或 LED 作照明

客戶可視需要作規格的選定

適用於音響系統的音量指示

## ST-475



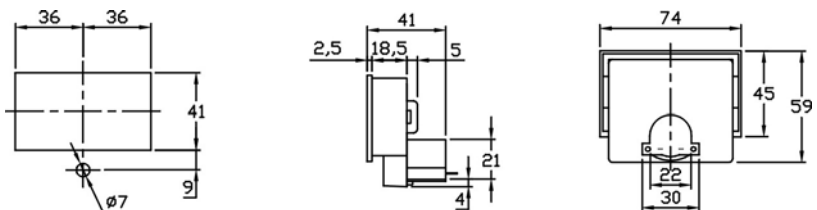
- 規格：DC uA – 200,500  
DC mA – 1,5,10,15,20,30,50,100,150,300,500  
DC A – 1,5,10  
DC V – 5,10,15,20,30,50,100,150,300,500
- 準確度：2.0 級
- 材質：壓克力蓋，ABS 的底，Bezel mounting
- 顏色：黑底刻度板，黃色窗型外框固定
- 指針：刀形或管狀，橙紅色或黑色

視需要選擇燈泡或 LED 作照明

客戶可視需要作規格的選定

適用於音響系統的音量指示

## ST-315



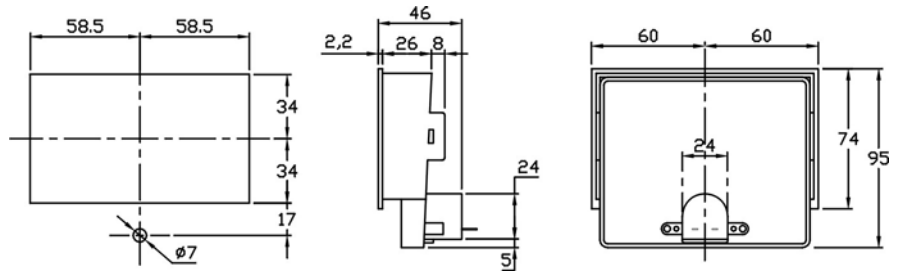
- 規格：DC uA – 200,500  
DC A – 1,5,10  
DC V – 5,10,15,20,30,50,100,150,300,500
- 準確度：2.0 級
- 材質：壓克力蓋，ABS 的底，Bezel mounting
- 顏色：黑底刻度板，黃色窗型外框固定
- 指針：刀形或管狀，橙紅色或黑色

視需要選擇燈泡或 LED 作照明

客戶可視需要作規格的選定

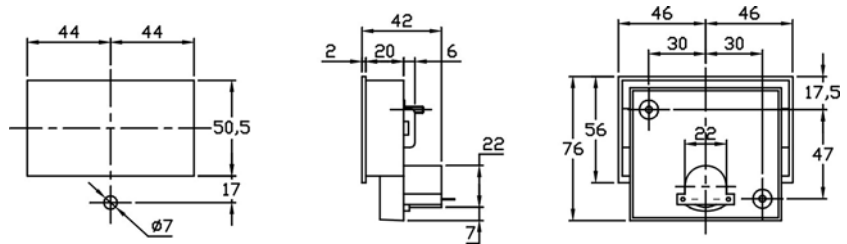
適用於音響系統的音量指示

## ST-160



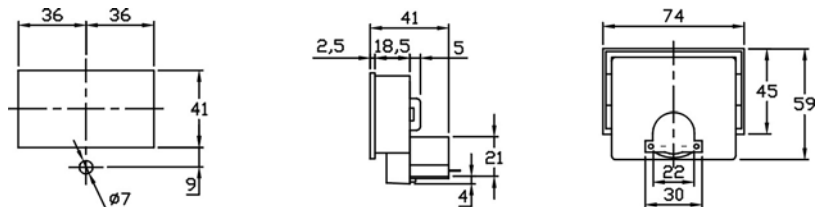
- **Measuring Range :** DC uA – 200,500  
DC A – 1,5,10  
DC V – 5,10,15,20,30,50,100,150,300,500
  - **Accuracy :** Class 2.0
  - **Case And Composition :** Acrylic Resin front and ABS Resin case  
Bezel mounting
  - **Color :** Black case, yellow scale plate
  - **Pointer :** Tube type, black or red
- Illumination lamp or LED optional**  
**Custom ranges depend upon warrant quantity**  
**Suitable for VU meters of Amplifier usage**

## ST-475



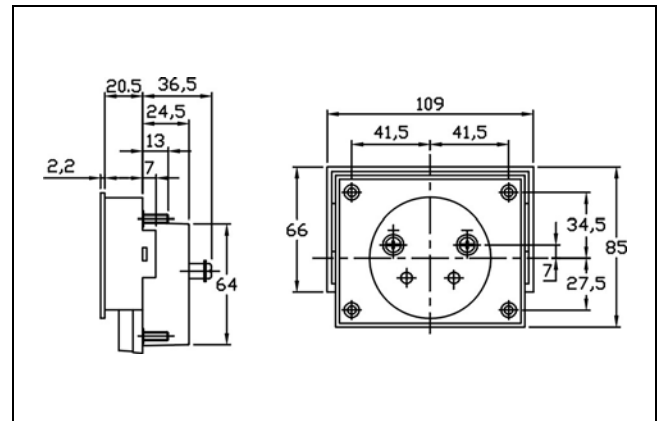
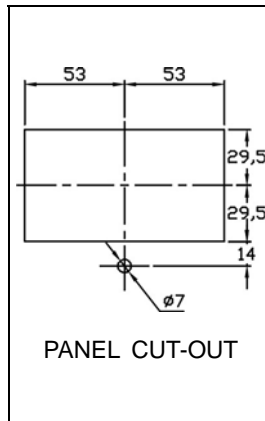
- **Measuring Range :** DC uA – 200,500  
DC mA – 1,5,10,15,20,30,50,100,150,300,500  
DC A – 1,5,10  
DC V – 5,10,15,20,30,50,100,150,300,500
  - **Accuracy :** Class 2.0
  - **Case And Composition :** Acrylic Resin front and ABS Resin case  
Bezel mounting
  - **Color :** Black case, yellow scale plate
  - **Pointer :** Knife type or tube black or red
- Illumination lamp or LED optional**  
**Custom ranges depend upon warrant quantity**  
**Suitable for VU meters of Amplifier usage**

## ST-315



- **Measuring Range :** DC uA – 200,500  
DC A – 1,5,10  
DC V – 5,10,15,20,30,50,100,150,300,500
  - **Accuracy :** Class 2.0
  - **Case And Composition :** Acrylic Resin front and ABS Resin case  
Bezel mounting
  - **Color :** Black case, yellow scale plate
  - **Pointer :** Knife type or tube black or red
- Illumination lamp or LED optional**  
**Custom ranges depend upon warrant quantity**  
**Suitable for VU meters of Amplifier usage**

## ST-100R



### Measuring Ranges :

#### Moving Coil Type

DC uA	DC mA	DC A	DC V
50	1	1	3
100	5	5	5
150	10	10	10
200	50	20	15
250	100	30	20
300	150	50	30
500	200		50
800	300		100
	500		150
	800		200
			300
			500
			750

#### Moving Iron Type

AC mA	AC A	AC V
50	1	150
100	5	250
150	15	300
200	20	500
250	30	
300	50	
500		
800		

#### Rectifier Type

AC V
10
15
20
30
50
100
150
200
300
500

- **Case And Composition :** Acrylic resin front and bakelite case.  
Bezel mounting.
- **Accuracy :** Moving coil type DC, Class 2.0  
Moving Iron type AC, Class 2.5  
Rectifier Type AC, Class 2.0
- **Color :** Black case and white scale plate.
- **Pointer :** Tube or Knife type, color in black or red.